














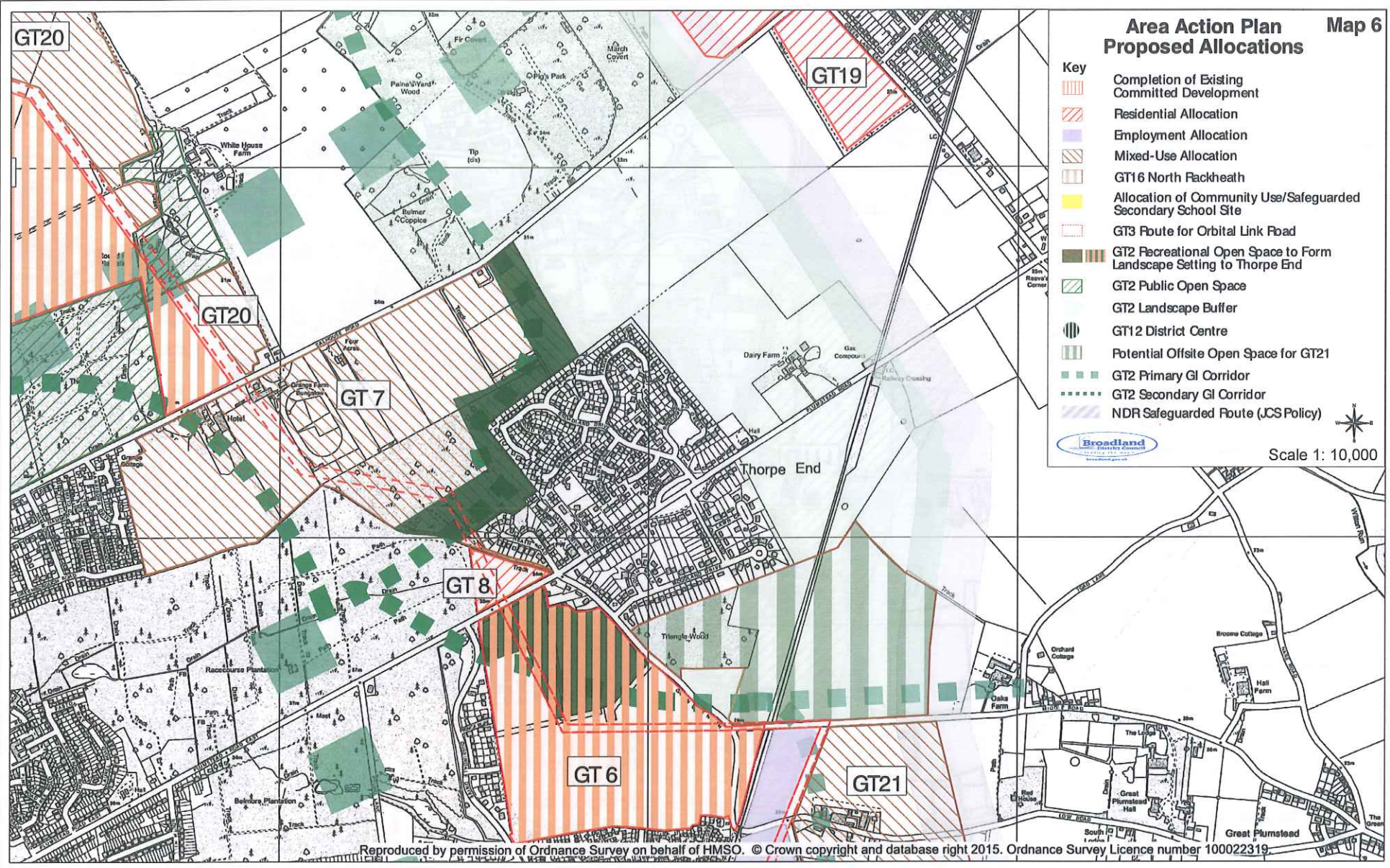


Area Action Plan Map 6 Proposed Allocations

- Key**
-  Completion of Existing Committed Development
 -  Residential Allocation
 -  Employment Allocation
 -  Mixed-Use Allocation
 -  GT16 North Fackheath
 -  Allocation of Community Use/Safeguarded Secondary School Site
 -  GT3 Route for Orbital Link Road
 -  GT2 Recreational Open Space to Form Landscape Setting to Thorpe End
 -  GT2 Public Open Space
 -  GT2 Landscape Buffer
 -  GT12 District Centre
 -  Potential Offsite Open Space for GT21
 -  GT2 Primary GI Corridor
 -  GT2 Secondary GI Corridor
 -  NDR Safeguarded Route (JCS Policy)

 Scale 1: 10,000



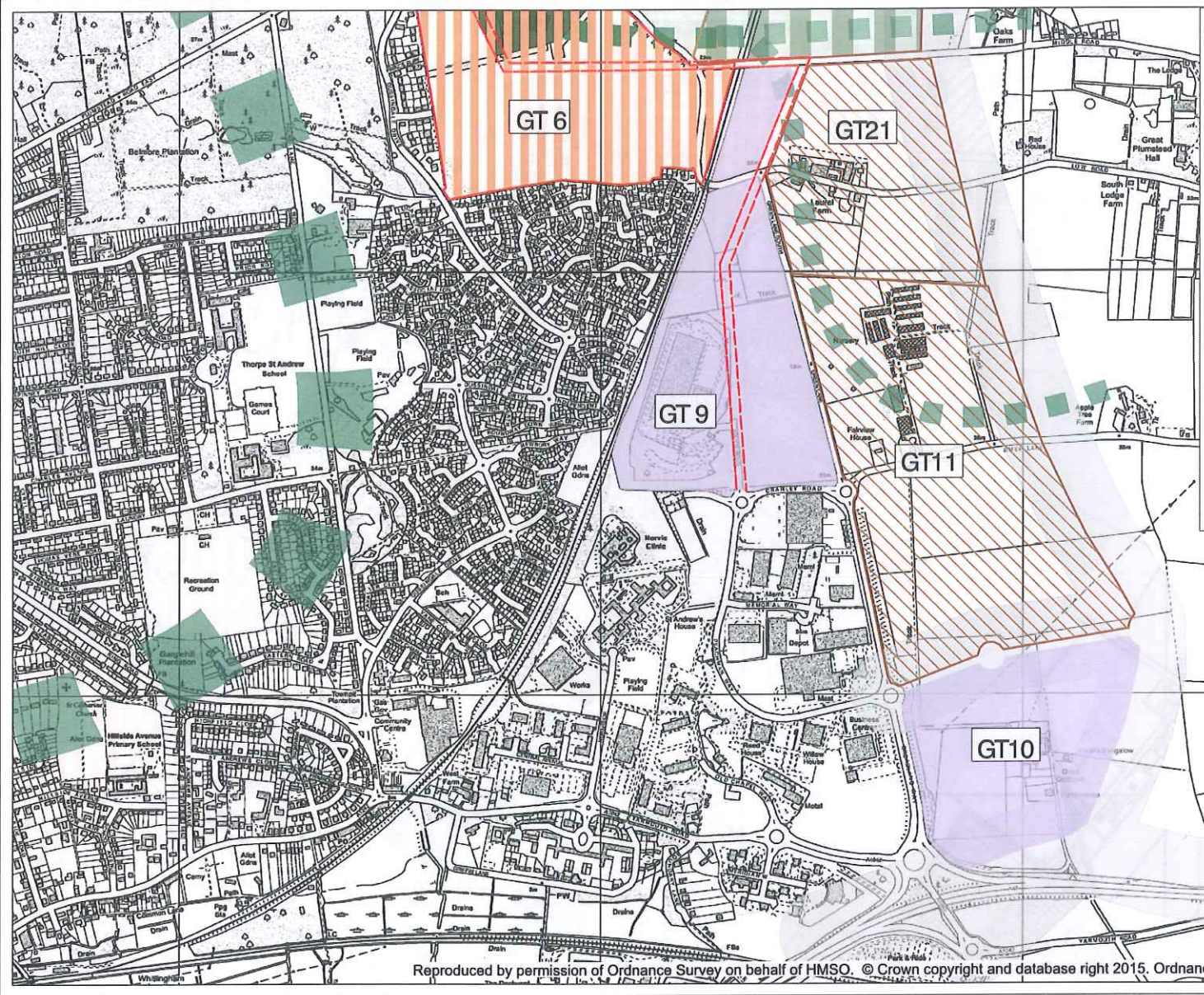
Reproduced by permission of Ordnance Survey on behalf of HMSO. © Crown copyright and database right 2015. Ordnance Survey Licence number 100022319

Area Action Plan **Map 7** Proposed Allocations

Key

- Completion of Existing Committed Development
- Residential Allocation
- Employment Allocation
- Mixed-Use Allocation
- GT16 North Packheath
- Allocation of Community Use/Safeguarded Secondary School Site
- GT3 Route for Orbital Link Road
- GT2 Recreational Open Space to Form Landscape Setting to Thorpe End
- GT2 Public Open Space
- GT2 Landscape Buffer
- GT12 District Centre
- Potential Offsite Open Space for GT12
- GT2 Primary GI Corridor
- GT2 Secondary GI Corridor
- NDR Safeguarded Route (JCS Policy)

Broadland District Council
Scale 1: 10,000



Reproduced by permission of Ordnance Survey on behalf of HMSO. © Crown copyright and database right 2015. Ordnance Survey Licence number 100022319.